



MONTHLY MEMBERSHIP PROGRESS REPORT

District 19 D

Results as of: 06/30/2019

GMT: GORDON ZIEGLER

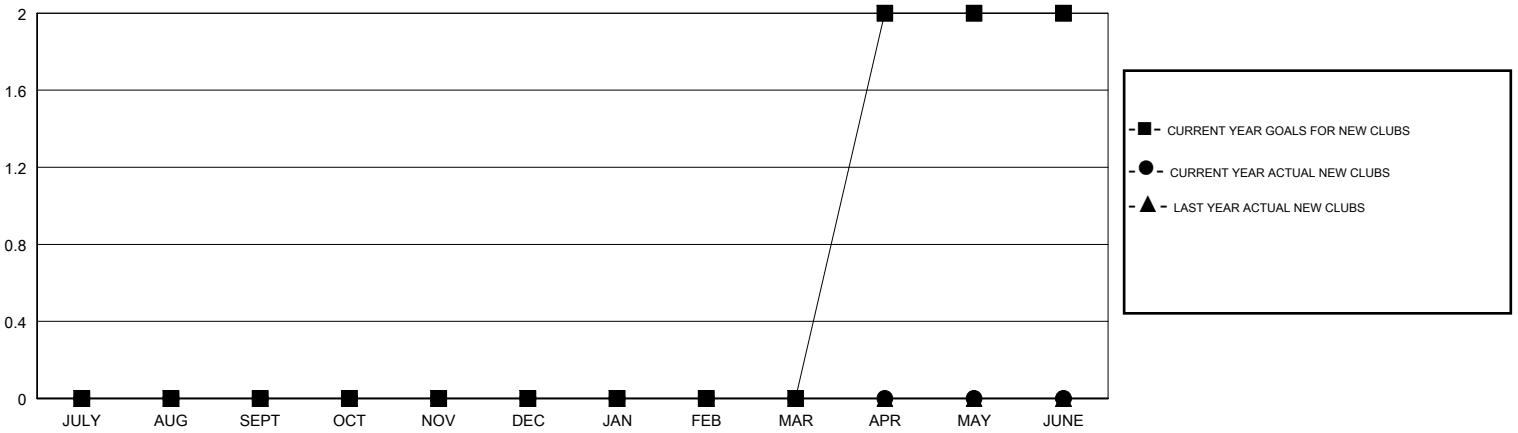
LOCATION WASHINGTON

GMT CA

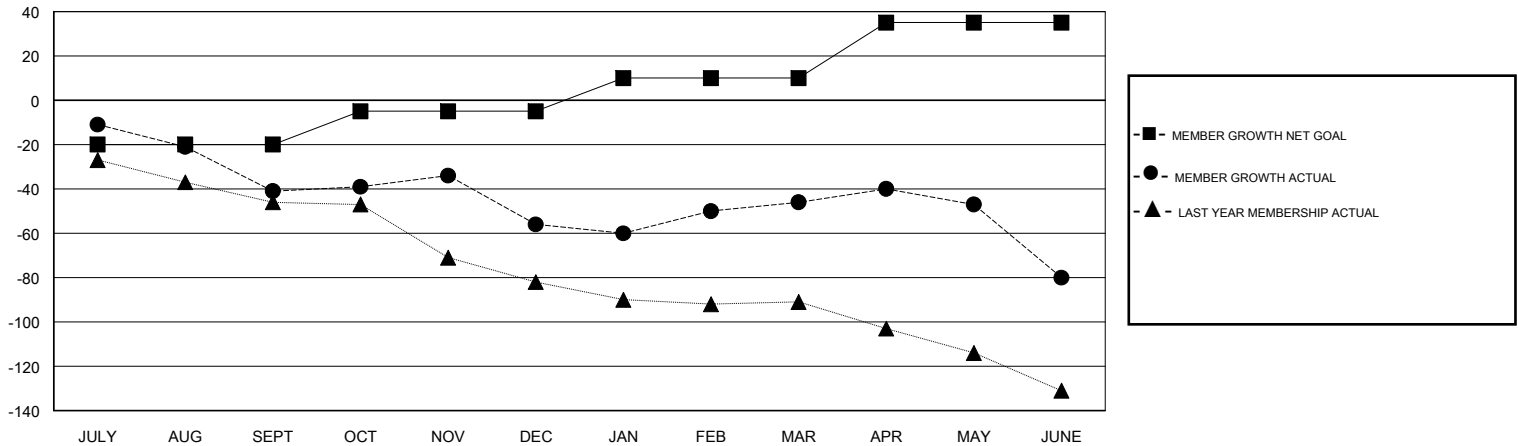
Clubs			
RESULTS FOR 2018-2019			
QUARTER	NEW CLUB GOAL	NEW CLUBS	DROPPED CLUBS
JULY/AUG/SEPT	0	0	0
OCT/NOV/DEC	0	0	2
JAN/FEB/MAR	0	0	0
APR/MAY/JUNE	2	0	0

Members			
RESULTS FOR 2018-2019			
QUARTER	MEMBER GROWTH NET GOAL	MEMBER GROWTH ACTUAL	DROPPED MEMBERS ACTUAL (including transfers)
JULY/AUG/SEPT	-20	14	53
OCT/NOV/DEC	15	28	42
JAN/FEB/MAR	15	40	28
APR/MAY/JUNE	25	27	57

GOALS AND ACTUAL NEW CLUBS CUMULATIVE



GOALS AND ACTUAL MEMBERS CUMULATIVE



DROPPED CLUBS: 2	32 CLUBS OF 47 ADDED 1 OR MORE NEW MEMBERS	<u>GENDER DISTRIBUTION</u>	
DROPPED MEMBERS		MALE	641 (56.23%)
DECEASED	13	FEMALE	499 (43.77%)
CLUB CANCELLED	2	Women Percentage Fiscal Year Goal: 45%	
OTHER	165	TOTAL FAMILY UNIT MEMBERS	297
TOTAL	180	FAMILY MEMBERS PAYING HALF DUES	150

[CLICK HERE FOR CUMULATIVE MEMBERSHIP DATA](#)